

Entree 一品

Soft Shell Crab \$16.50
Crumbed and deep fried soft shell crab with homemade special sauce.



Tempura Entree \$16
Prawn (2pcs), fish (1pc) and veggies (6pcs) in a light tempura batter fried with tempura sauce.



Nasu Dengaku \$9.50
Deep fried eggplant with sweet miso sauce on top.



Sui Gyoza \$8.80
Boiled vegetable dumplings served with Japanese citrus vinegar dipping sauce.



Kobikaraage \$9.50
Deep fried harbour prawns lightly salted.



Yakizakana Entree \$11
Grilled half mackerel lightly salted.



Chuka Wakame \$7.80
Marinated seaweed.



Vegetable Croquette \$7.80
Mashed potato deep fried in crumbed bread.



Edamame \$4.80
Selected beans with salt.



Sutamina Hotate \$7.80
Specially marinated scallop.



Vege Tempura \$10
Seasonal veggies (8pcs) in a light tempura batter with tempura sauce.



Takoyaki \$7.80
Grilled octopus mince ball served with special sauce.



Agedashi Tofu \$6.80
Fried bean curd in tempura sauce.



BBQ Calamari (Teriyaki / Ginger Sauce) \$15
Marinated calamari.



Kabutoshioyaki \$13
Grilled salted kingfish head.



Pork / Vegetable Gyoza \$9.50
Pan-fried Japanese style dumpling-pork and veggies / veggies.



Torikara \$12
Crumbed and deep fried tender chicken.



Gesô Karaage \$9.50
Crumbed and deep fried calamari tentacles.



Beef Tataki (Ponzu (citrus) / Special Spicy Sauce) \$13
Thinly sliced rare beef.



Tsukune \$10
Grilled chicken mince ball served with teriyaki sauce.

Main 主菜



Teriyaki Tofu \$15
Tofu and vegetables marinated in Sakae teriyaki sauce with salad.



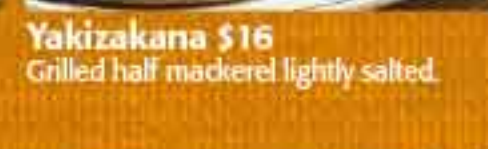
Teriyaki Chicken \$16
Chicken fillet marinated in Sakae teriyaki sauce with salad.



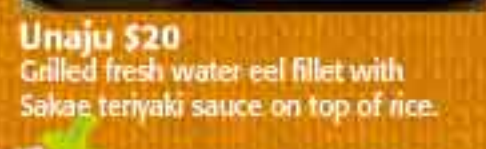
Teriyaki Salmon \$19
Freshly grilled salmon steak with Sakae teriyaki sauce.



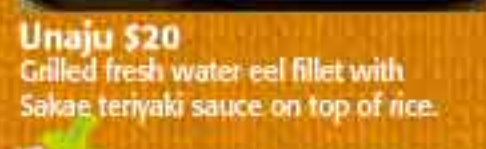
Chicken Katsu \$16 / Pork Katsu \$17
Deep fried chicken or pork fillet served with katsu sauce and salad.



Mix Katsu \$17
Deep fried crumbed prawn, fish and vegetable croquette with salad.



Yakizakana \$16
Grilled half mackerel lightly salted.



Unaju \$20
Grilled fresh water eel fillet with Sakae teriyaki sauce on top of rice.

Bento 弁当



Dinner Box Deluxe \$32
Specially selected fresh salmon sashimi (9pcs), tempura, chicken katsu and eel on rice with salad. Include miso soup.



Dinner Box \$19.50
Served with sashimi (5pcs), tonkara, salad, pickle and Japanese side dish. Include miso soup.

Sashimi 刺身



Oyster Sashimi \$18
Selected fresh oyster served with ponzu (citrus) sauce (6pcs).



Sashimi Deluxe \$32
Today's specially selected combination sashimi (22pcs).

Items may vary due to seasonal and market conditions.



Sashimi Small \$17
Fresh salmon, kingfish, tuna (9pcs).



Salmon Sashimi \$16
Selected salmon Sashimi (9pcs).



Sashimi Main \$23
Selected Sashimi (15pcs).

Sushi 寿司

Items may vary due to seasonal and market conditions.



Combi Sushi \$20
Selected nigiri sushi (8pcs) with thin roll (6pcs).



Spicy Roll (6pcs) \$9.50
Raw tuna or Salmon & avocado



Rainbow Roll (6pcs) \$12.50
Assorted sashimi on top of California roll.



California Don \$15
Prawns, flying fish roe, egg, avocado, cucumber and crab meat on top of sushi rice.



Salmon Only Sushi \$17
Nigiri sushi (6pcs) with thin roll (6pcs).



Aburi Salmon Sushi \$18
Lightly grilled salmon belly sushi (6pcs) with thin roll (6pcs).



California Roll (4pcs) \$7
Flying fish roe, egg avocado and cucumber.



Salmon Avo Roll (4pcs) \$7.50



Cooked Tuna & Avo Roll (4pcs) \$7



Tempura Prawn & Avo Roll (4pcs) \$8.50



Spider Roll (4pcs) \$9.50
Soft shell crab and vegetables with mayonnaise.



Chicken / Pork Katsu & Avo Roll (4pcs) \$8



Sakae Don \$18
A variety of sliced fresh fish and salmon roe on top of sushi rice.



Salmon Oyako Don \$17
Sliced fresh salmon and salmon roe on top of sushi rice.



Vegetable Roll (4pcs) \$7

Sushi A-la-carte 寿司 ア・ラ・カルト

Nigiri Sushi 2PCS

Egg	\$4.00
Cattlefish	\$4.00
Prawn	\$4.00
Salmon	\$5.00
Flying Fish Roe	\$5.00

Thin Roll 6PCS

Kingfish	\$6.00
Eel	\$6.00
Scallop	\$6.00
Tuna	\$6.00
Salmon Roe	\$7.00

Hand Roll

Cucumber	\$4.00
Avocado	\$4.00
Cooked Tuna	\$4.00
Crab Stick	\$4.00
Salmon	\$4.50
Raw Tuna	\$5.00

Vegetable

Vegetable	\$4.80
California	\$5.80
Cooked Tuna & Cucumber	\$5.80
Salmon & Avo	\$6.50
Eel & Cucumber	\$6.80
Tempura Prawn & Avo	\$7.00

Noodle 麵

Nabeyaki Udon \$16
Udon noodle soup (Fish Stock) in a hot pot with seafood tempura and vegetable.



Miso Nikomi Udon \$16
Miso based udon noodle soup with chicken, egg, vegetable and mushroom.



Udon (Hot / Cold) \$9
Thick noodle in soup (Fish Stock), seaweed and shallots.

Soba (Hot / Cold) \$10
Buckwheat noodle (Fish Stock).



Tempura Udon / Soba \$17
Noodle (Fish Stock) with tempura prawns (2pcs) and veggies (3pcs).



Katsu Udon (Chicken / Pork) \$14
Chicken or pork schnitzel on top of thick noodle in soup (Fish Stock).

Steamed Chicken Udon \$14
Steamed chicken on top of thick noodle in soup (Fish Stock).



Sakae Ramen \$14
Egg noodle in a soy sauce based soup (Chicken and Pork Stock).



Curry Udon \$13
Thick noodle with Japanese chicken curry soup.

Curry Soba \$14
Buckwheat noodle with Japanese chicken curry soup.

Katsu Curry Udon (Chicken / Pork) \$16

Katsu Curry Soba (Chicken / Pork) \$17

Tuna (5pcs)



Salmon (5pcs)



Kingfish (5pcs)



Oyster (3pcs)



Sashimi \$7*

(Normal price \$9.80)

*Conditions apply

Order any:

Main/Curry/Noodle/Don/ Box

and you can choose any

1 from 4 kinds of sashimi.

*Items may vary due to seasonal, market conditions or selling out.

Don 丼

Include Miso Soup!



Ten Don \$16
Prawn, fish and vegetable tempura with teriyaki sauce on top of rice.



Oyako Don \$14
Specially cooked chicken with onion and egg on top of rice.



Chicken / Pork Katsu Don \$14
Specially cooked deep fried either chicken or pork with onion and egg on top of rice.



Beef Hamburg Don \$16
Japanese style beef hamburger patties on rice with shredded cabbage, cheese, mayonnaise & teriyaki sauce topped with an egg.



Unatama Don \$17
Specially cooked eel with onion and egg on top of rice.



Gyu Don \$14
Thinly sliced beef and onion specially cooked on top of rice.



Mixed Katsu Don \$15
Specially cooked fish, prawn and pork cutlet with onion and egg on top of rice.



Spicy Sashimi Don \$16
Mixed vegetables and fresh sashimi with vinegared spicy chilli sauce on top of rice.

Curry カレー

Add Toppings to Your Curry

(Toppings are available with Curry order only. Up to 2 toppings.)



PLUS

Japanese Curry \$13
Japanese chicken curry rice.



3pcs
Chicken Karaage \$3



Chicken Katsu \$3



Seafood Katsu \$3



Pork Katsu \$3

Salad サラダ

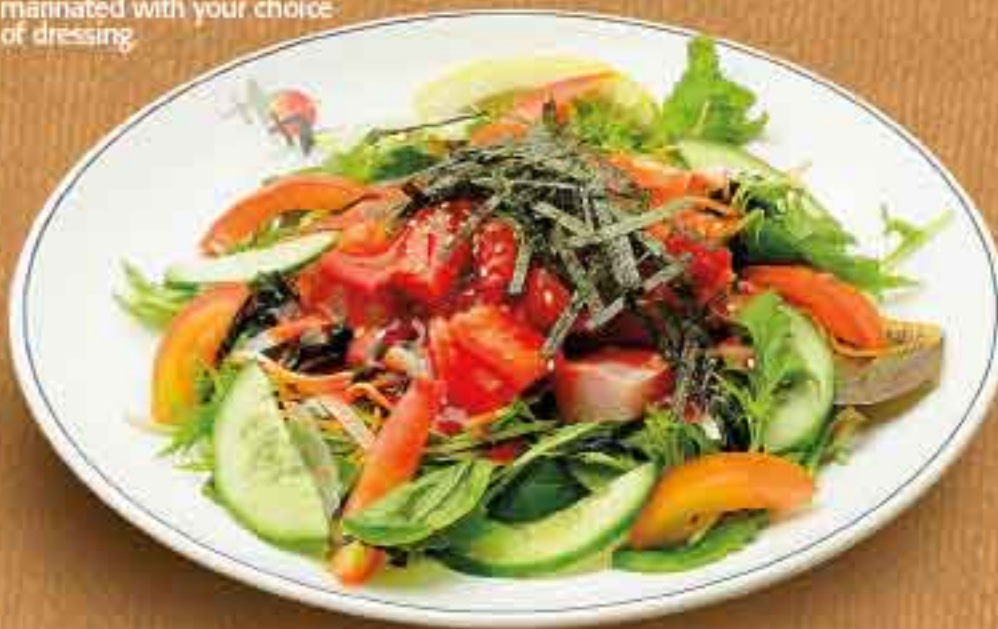
Sashimi Salad \$16
(Special Vinegared Chilli Sauce / Wasabi Dressing)
Mixed veggies and fresh sashimi marinated with your choice of dressing.



Tofu & Seaweed Salad \$12
Mixed veggies, tofu and seaweed with sesame dressing.



Tuna Salad \$14
Mixed veggies and specially marinated cooked tuna served with special Sakae dressing.



Dessert デザート



Green Tea Ice Cream \$7.50
Topped with red bean.



Black Sesame Ice Cream \$7.50
Topped with red bean.

Side Dish 添え物

Rice\$2.00 Yakko.....\$4.80
Miso Soup\$2.00 Potato Salad.....\$5.80

Soft Drink 飲み物

Japanese Tea.....\$2.00 (Refill Free)	Lipton Iced Tea.....\$3.00 (Peach / Lemon)	Japanese Green Tea.....\$3.50 (Cold Can, Imported)	Calpis Water.....\$3.50 (Imported)
Coke / Diet Coke / Solo / Sprite / Zero.....\$2.50	Still Mineral Water.....\$3.00	Aloe.....\$3.50	Bundaberg.....\$3.50
Orange Juice.....\$3.00	Sparkling Mineral Water.....\$3.50	Lamune.....\$3.50 (Japanese Sprite, Imported)	
Apple Juice.....\$3.00			

BYO \$2.50 per person



SAKAE MARRICKVILLE
303 Illawarra Road, Marrickville 2204